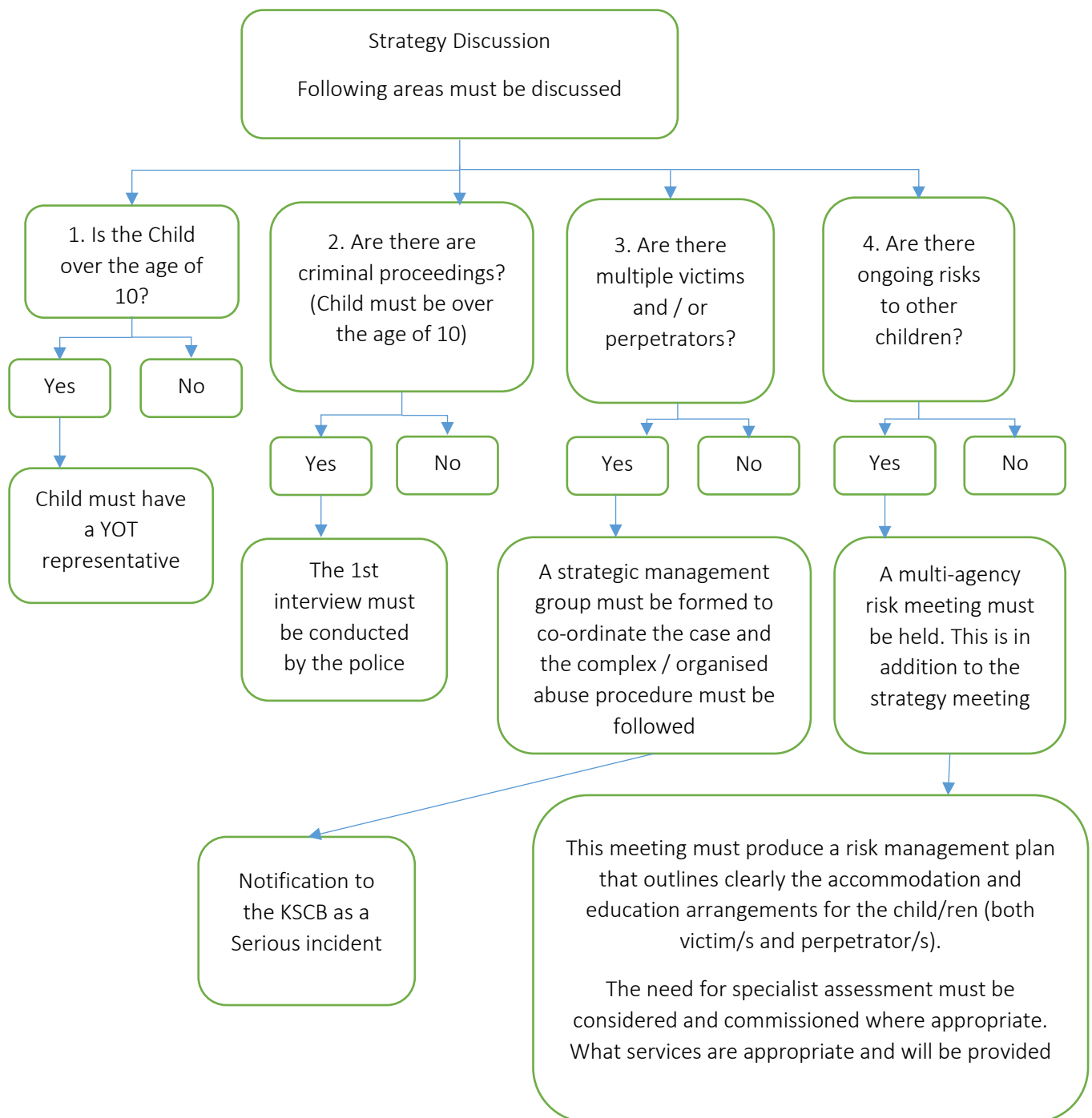


* See the Strategy Discussion flowchart



Assessment guidance

- Need for separate social workers for victim and perpetrator, even if in the same household

All Assessments should include:

- Details of the incident/s (including impact on victim/s, context of abusive behaviours, age of victim/s, nature of relationship between the children / young people involved)
- Child and young person's development, family and social circumstances
- Whether the "perpetrator" child / young person acknowledges the alleged behaviour
- Whether there are grounds to suspect that the "perpetrator" child / young person has been abused or there are adults involved in the development of the harmful sexual behaviour

- Details of previous incident/s
- Assessment of child's need and the need for any specialist assessments (including capacity / learning disability)
- Safety of other young people including a Risk management plan for school and one for home
- Accommodation and Education arrangements
- What services need to be provided